

Live Cell Imaging in Your Incubator



etaluma™
microscopy simplified™



LS620 with phase

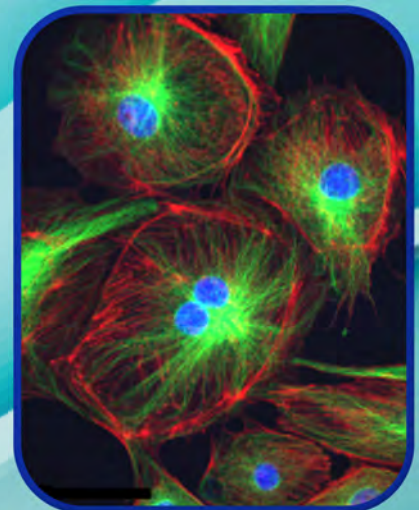
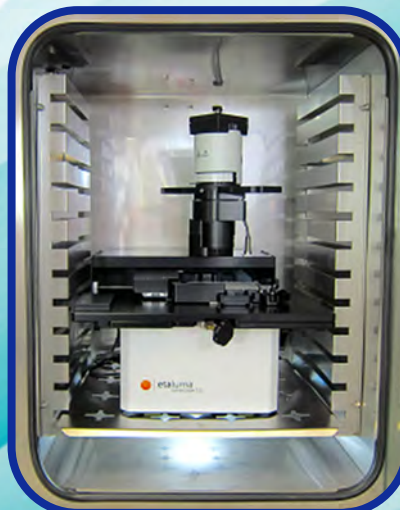
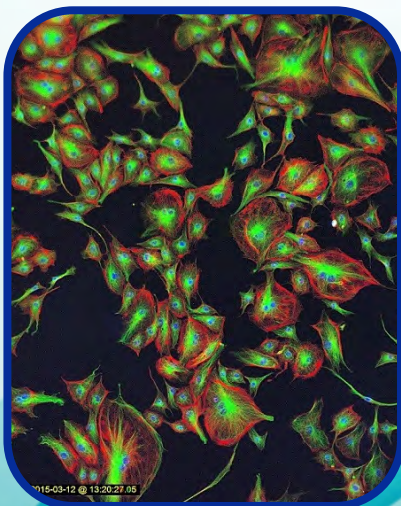


LS560 with phase



LS720 with phase

- High resolution, compact, affordable
 - Near diffraction-limited, zero pixel shift
 - Fluorescence, brightfield, phase contrast
 - Microplates, flasks, microfluidic chips
- 2.5x to 100x (oil)
 - Time-lapse, live video
 - Image in your incubator
 - No AC power, uses USB
 - Large 1900 x 1900 pixel sensor



Blue, Green and Red Fluorescence, Brightfield, Optional Phase Contrast

www.etaluma.com

Comparison of Lumascope Models

Features	Lumascope 560	Lumascope 620	Lumascope 720
Optics	Green fluorescence; brightfield	Blue, green & red fluorescence; brightfield	Blue, green & red fluorescence; brightfield
Phase Contrast	Phase contrast optional (Olympus)	Phase contrast optional (Olympus)	Phase contrast optional (Olympus)
Objective Options	1.25x, 2.5x, 4x, 10x, 20x, 40x, 60x, and 100x(oil) magnification	1.25x, 2.5x, 4x, 10x, 20x, 40x, 60x, and 100x(oil) magnification	1.25x, 2.5x, 4x, 10x, 20x, 40x, 60x, and 100x(oil) magnification
Objective Compatibilities	RMS-threaded, infinity corrected, 45 mm parfocal distance	RMS-threaded, infinity corrected, 45 mm parfocal distance	RMS-threaded, infinity corrected, 45 mm parfocal distance
Fluorescence Filters	Green: Ex 457-493, Em 508-552 nm	Blue: Ex 370-410, Em 429-462 nm Green: Ex 473-491, Em 502-561 nm Red: Ex 580-598, Em 612-680 nm	Blue: Ex 370-410, Em 429-462 nm Green: Ex 473-491, Em 502-561 nm Red: Ex 580-598, Em 612-680 nm
Camera	High Sensitivity Monochrome CMOS Sensor, C-mount	High Sensitivity Monochrome CMOS Sensor, C-mount	High Sensitivity Monochrome CMOS Sensor, C-mount
Image Formats	BMP, JPG, PNG, or TIF	BMP, JPG, PNG, or TIF	BMP, JPG, PNG, or TIF
Image Size	100 x 100 to 1700 x 1700 pixels	100 x 100 to 1900 x 1900 pixels	100 x 100 to 1900 x 1900 pixels
Field of View	Up to 1.06 x 1.06 mm with 20x objective	Up to 0.78 x 0.78 mm with 20x objective	Up to 0.78 x 0.78 mm with 20x objective
Video Rates	Up to 10 fps; up to 30 fps with reduced frame size	Up to 10 fps; up to 30 fps with reduced frame size	Up to 10 fps; up to 30 fps with reduced frame size
Stage	Manual XY	Manual XY	Automated XYZ, SBS nest, 6- to 1536 -well microplates; microfluidic chambers (contact Etaluma)
Subdeck	NA	NA	No automation; most flasks, dishes, other
Well-to-well time (seconds)	NA	NA	Image 96 wells: a) 1 color focus & image: 13 min; b) 3 color focus & image: 34 min
Computer Requirements	Windows 7, 8, 8.1, 10; Core i5, SSD	Windows 7, 8, 8.1, 10; Core i5, SSD	Windows 7, 8, 8.1, 10; Core i5, SSD
Automation Friendly	SDK available	SDK available	SDK available; MATLAB option
Power Requirements	USB	USB	USB for Lumascope; 100-240 V, 50-60 Hz for autostage
Dimensions	24 W x 17.5 D x 16.5 H cm (9.4 W x 6.9 D x 6.5 H inches)	24 W x 17.5 D x 16.5 H cm (9.4 W x 6.9 D x 6.5 H inches)	37.4 W x 43.8 D x 46.8 H cm (14.7 W x 17.3 D x 18.4 H inches)
Weight	4.5 kg (10 lb)	4.5 kg (10 lb)	13 kg (29 lb)
Operating Conditions	0°C - 42°C 5% - 95% RH non-condensing	0°C - 42°C 5% - 95% RH non-condensing	0°C - 42°C 5% - 95% RH non-condensing



AXT PTY LTD
 Authorised Distributor
 Etaluma
 Australia & New Zealand

1/3 Vuko Place
 Warriewood
 NSW 2102 Australia

+61 (0)2 9450 1359
 axt.com.au
 info@axt.com.au